

*Kido*

KIDO GREENWICH NURSERY & PRESCHOOL

[kidoschools.com](http://kidoschools.com)





**EducationInvestor**  
Awards 2020

**WINNER**

Private education  
group of the year

“Kido has brought innovation and energy to the early years sector.”

Judges at the Education Investor Award 2020



# Welcome to **Kido Greenwich**

---



early years, reimagined

The first five years are the most crucial period of any child's life. And yet, the world over, nurseries and preschools rely on 20th century teaching and technology to prepare children for the 21st century.

At Kido, we've set out to change that, and bring advances in pedagogy, design and technology to create the highest quality nurseries and preschools anywhere.

Across the world, and here in the heart of Greenwich, we're creating magical spaces for children to play, learn, grow and thrive. Reach out to us and your dedicated nursery manager will take you on a tour of a magical learning journey for your child.



"We are very happy with Kido nursery for the past year since he joined. My almost-two-year-old looks forward to going, making me much calmer about leaving him while I work. The staff are all friendly and loving."

Val B  
Parent, Kido





"Kido has been an outstanding nursery for my daughter over the past 3 years and we couldn't be happier. Thank you for all of the the hard work and love that the setting provides for the children."

Sean M  
Parent, Kido



# The Kido Story

---

by parents, for parents

We are owned and operated by a group of parents from all over the world. We were set up in response to our founders' struggles as young parents in different cities around the world. So, since our first school in Hong Kong in 2014, we've been obsessed with two things: improving learning outcomes for children, and our service to parents.

To meet our twin objectives, we've invested significantly in people, technology and systems on every aspect of a nursery operation - recruitment, training, curriculum, operations, observations and assessments, parent communication and much more.

We've served thousands of families in places as diverse as the USA, the UK, the UAE, India and China. Being international, we incorporate best practices from around the world.



# Kido Nurseries & Preschools

---

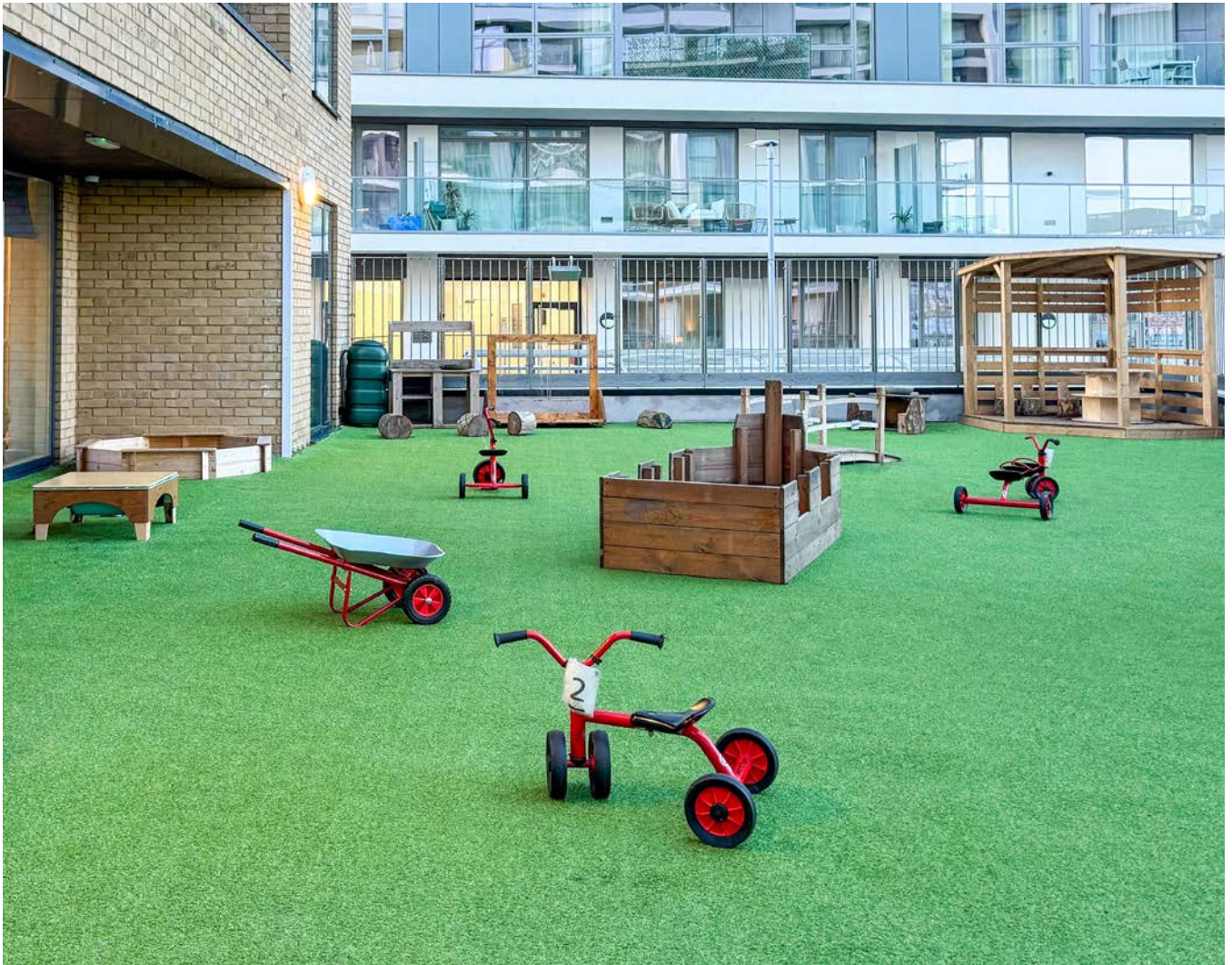
nursery, meet the future

We are on a mission to build the best early learning spaces in the world. According to the Reggio Emilia approach to early education, the environment is considered the third educator. With that in mind, we've created some of the most stimulating preschools and nurseries in the world. No location can ever be too beautiful for our children.

Our school design goes hand in hand with our pedagogy. Every area is set up to aid the learning journey of each child. Furniture and resources are curated from the best providers in the world. Our technology platform allows teachers to spend more time on the children and less on administration. We use technology as a tool to improve the experience of both children and parents.



Kido, Greenwich



“A lovely, clean space to enrich the students learning, and absolutely incredible and friendly staff. We feel so lucky to have found such an amazing nursery for our little one. I would highly recommend it. Outstanding.”

Max C  
Parent, Kido



"Really love the staff and space at this nursery. Such an essential for a working parent. They go out of their way to make my daughter feel welcome and safe. She loves the food too!"

Suzette C  
Parent, Kido





“Such a lovely daycare. My daughter entered when she was nine months - she quickly settled thanks to the very caring environment. Lots of fun activities and super clean. Very good reporting on kids progress. I highly recommend it.”

Jean C  
Parent, Kido



# Our Pedagogy

early years, reimagined

We believe that a combination of free and structured play, an engaging and interactive learning environment, and an abundance of love, care and attention provide the most solid foundation for children in the early years.

The Kido Early Years Program draws best practices from leading philosophies from around the world, such as Montessori, Reggio Emilia and the theory of Multiple Intelligences. It is developed in house and supported by a world renowned panel of advisors. Our pedagogical leadership team has over 200 years of combined experience in early years teaching, research and pedagogy across more than ten countries, and in multiple languages. We modify our program for each country that we operate in, to adhere to national curriculum framework.





"Kido is a great nursery with staff that make such an effort to get to know each child and foster strong relationships with both parents and children!"

Danielle  
Parent, Greenwich





“We love Kido. As a first time mum, I was very anxious at first but seeing my baby smile when I park the car to drop him off said a million words to me. He settled in very quickly and doesn’t even wait for me to wave goodbye as he is always excited to start his day.”

Anisa A  
Parent, Kido





“Kido has been a wonderful nursery for both of my daughters. They are both extremely happy here and the staff are fantastic - so friendly and incredibly caring.”

Ben S  
Parent, Kido



# Kido

# People

---

listen, learn, lead

Happy teachers make happy children. We've gone to great lengths to ensure that our people are the most highly trained, motivated and engaged anywhere. Heavy investments in recruitment ensure that your child is taught by the best. Our local and international training and development programs are intensive, and ongoing.

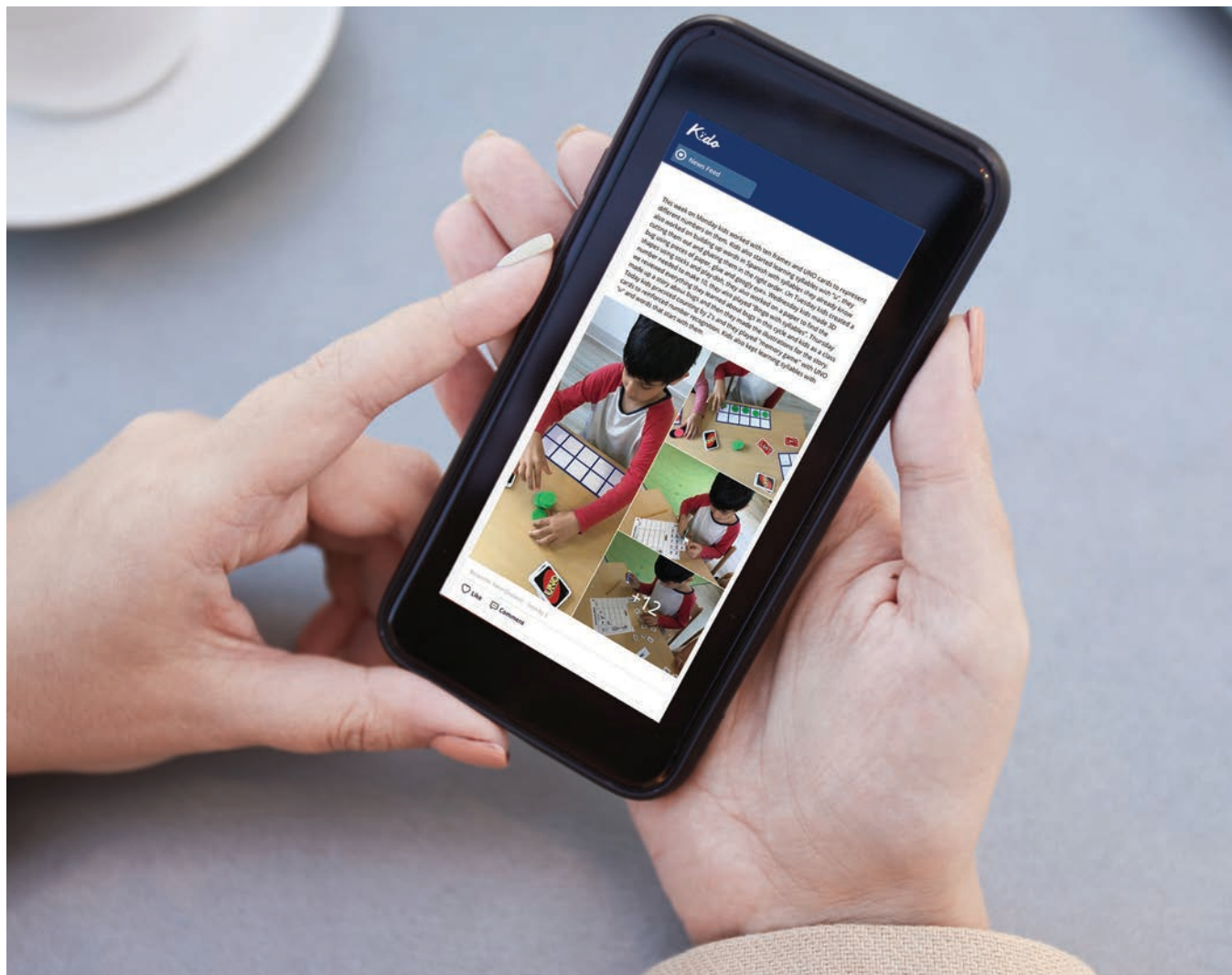
Leading experts from around the world run 'Master Classes' to ensure that our people are always a step ahead. Teachers have access to their peers from across the world in real time, so they can bring best practices from any classroom in the world to their own. Above all, we have perhaps the best benefits for our people in the industry, including discounted childcare for all Kido people and dedicated people trainers working alongside our teams to provide continuous professional development and on the job training and support.



"The staff is friendly and qualified. They seem to really care about the children."

Marlon L  
Parent, Greenwich





“Kido is an excellent nursery, our son settled well and is really happy there. Great to get the regular updates through the app, including observations and pictures. It's lovely seeing what he's been up to!”

Cara N  
Parent, Kido



# Parent **Communication**

---

always at your fingertips

The Kido Parent App keeps you in touch with the nursery in real time. You can track your child's progress, their 'wow' moments, and message the nursery in a secure manner through the app. New features are added continuously to keep enhancing the parent experience.

Your nursery manager is on hand to help with any enquiries, arrangements or questions. Our partnership with and service to parents is core to Kido, and we're dedicated to try and meet all your needs!



"Very friendly staff. My daughter is happy to go there and has lots of fun. The food is great and we have an app where you can track what your child is up to."

NK  
Parent, Kido





# Kido Greenwich

---

home away from home

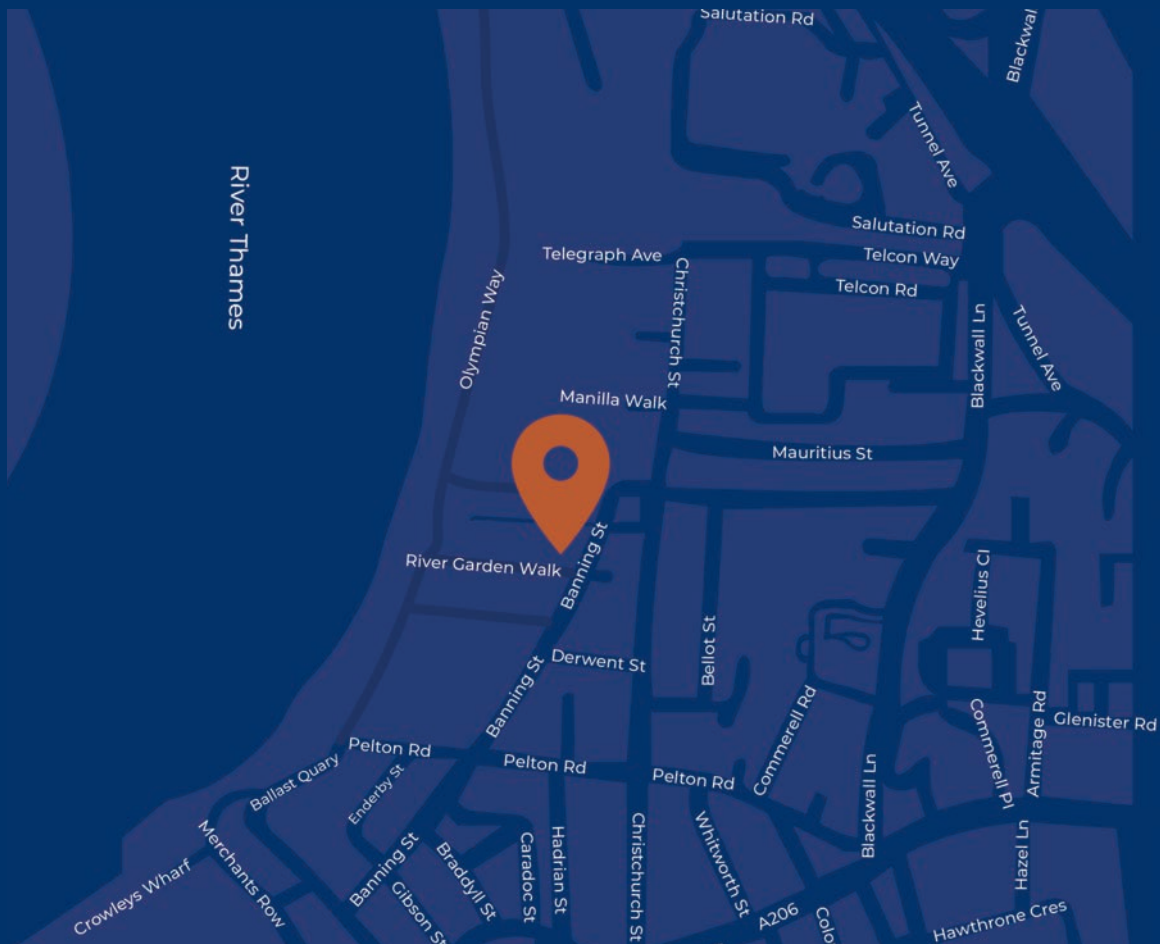
Kido Greenwich is truly special. The nursery provides children with enabling learning environments to discover and learn. The nursery benefits from being close to the River Thames with the riverside path enabling the children to visit Greenwich park, Cutty Sark and the Maritime Museum. Our beautiful, custom-built nursery is located over two floors in the River Gardens development in Greenwich. Immediately opposite a play park, the nursery features a podium level garden and outdoor play area as well as river views from the classrooms. Unique to Kido Greenwich is the indoor play area located in the reception area for your little ones to explore. The spacious nursery ensures plenty of room for all activities, with dedicated areas for babies, toddlers and preschoolers.



"Kido Nursery is a really friendly, welcoming environment with a lovely community of parents! Our 20 month old started at the nursery around 1 years old and has grown in character and developmental abilities significantly in that time."

Suzette C  
Parent, Kido





You'll find our nursery on Banning Street in the River Gardens development, just a stone's throw away from the River Thames.

---

65 Banning Street, London, SE 10 0YH, London  
+44 0208 053 0873 | [enquire.greenwich@kidoschools.com](mailto:enquire.greenwich@kidoschools.com) | [kidoschools.com](http://kidoschools.com) | [@kidolondon](https://www.instagram.com/kidolondon)